

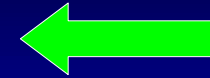
Controls Middleware – Towards a Common Infrastructure

Vito Baggiolini SL/CO
(On behalf of the CMW Project Team)

(1) Vito Baggiolini (CMW Team)

Overview

- Reminder
- State of Work
- CMW Users
- Conclusions



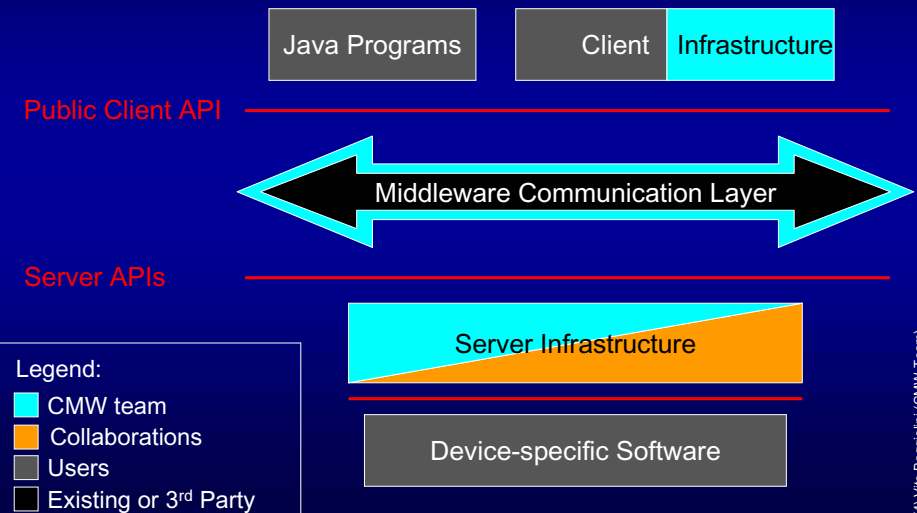
(2) Vito Baggiolini (CMW Team)

Controls Middleware (CMW)

- **Project Team:** (PS/CO and SL/CO)
 - K. Kostro, N.Trofimov, R.Swoboda, P.A. Pignard, St. Jensen, F. Chevrier, F.Calderini, V.Baggiolini
- **Device/Property Model**
 - Set/Get of device properties
 - Monitor device properties
- **Topic-oriented Model**
 - Publish/subscribe of information organized as topics
- **Implementation**
 - Stable, technology-independent APIs
 - Implemented with CORBA and Java Messaging Service

(3) Vito Baggiolini (CMW Team)

Simplified CMW Architecture



(4) Vito Baggiolini (CMW Team)

Overview

- Reminder
- State of Work
- CMW Users
- Conclusions

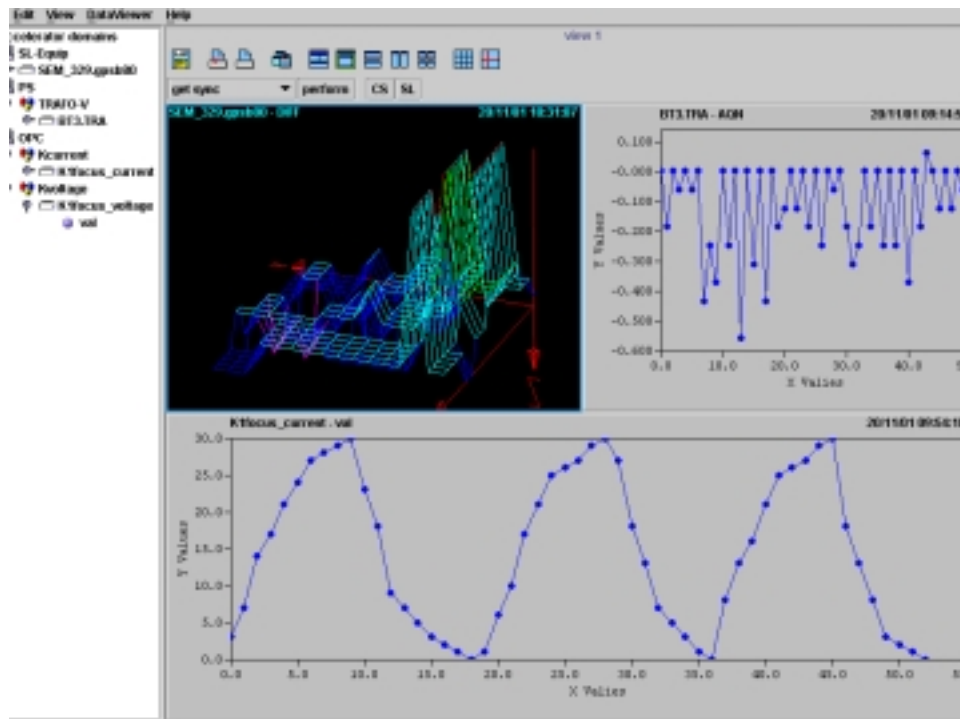


(c) Vito Baggolini (CMW Team)

Main Achievements since last Year

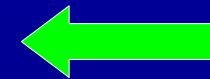
- Rewritten server infrastructure
 - Better performance and reliability
 - With experience of deploying PS servers
- SL-Equip Gateway + Passerelle
 - Access to all SL-Equip devices from Java
 - Device Access from Excel (Passerelle)
 - Used by members of SL/OP
- OPC Gateway
 - Access to PLCs through Middleware
 - Used by SL/HRF (Luca Arnaudon)
- Compliant with SL Release Mechanism

(c) Vito Baggolini (CMW Team)



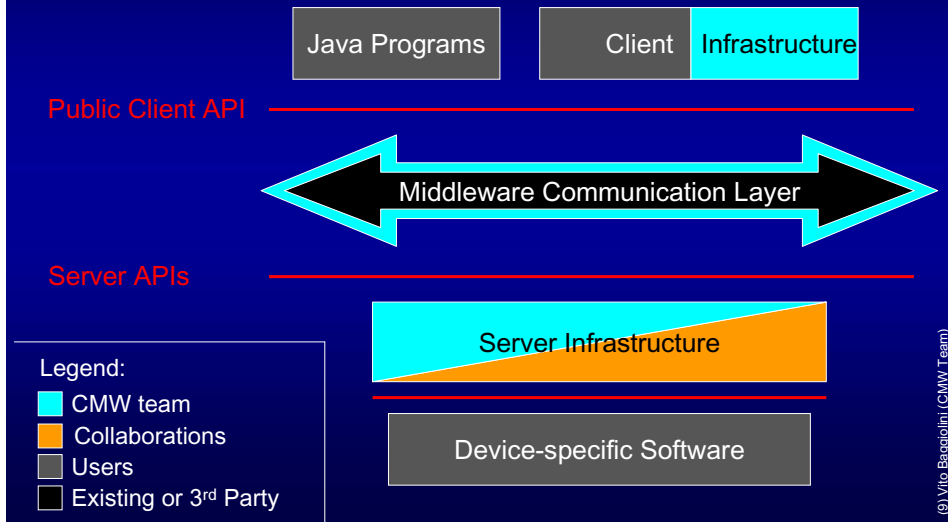
Overview

- Reminder
- State of Work
- CMW Users
- Conclusions

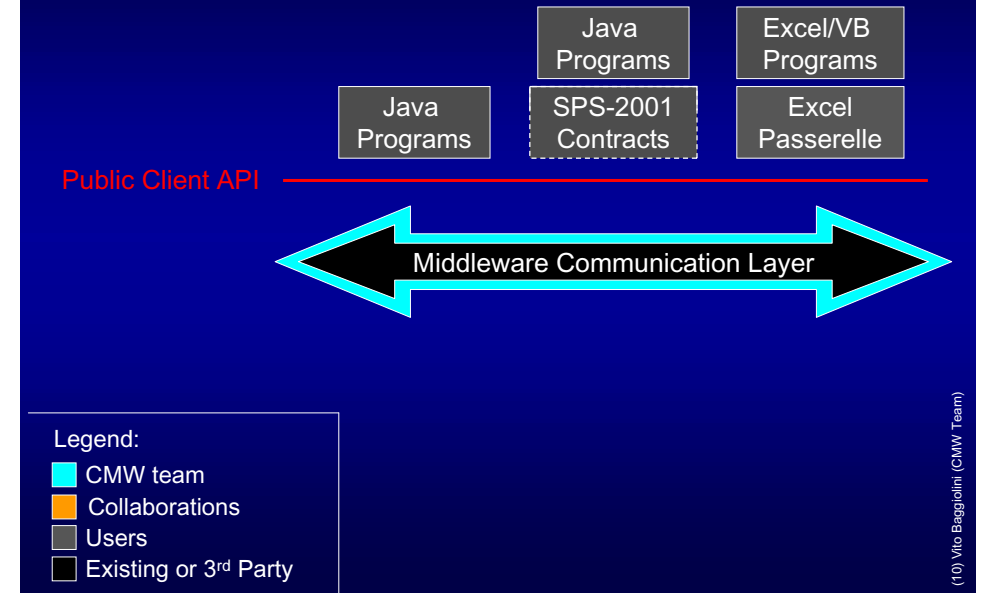


(c) Vito Baggolini (CMW Team)

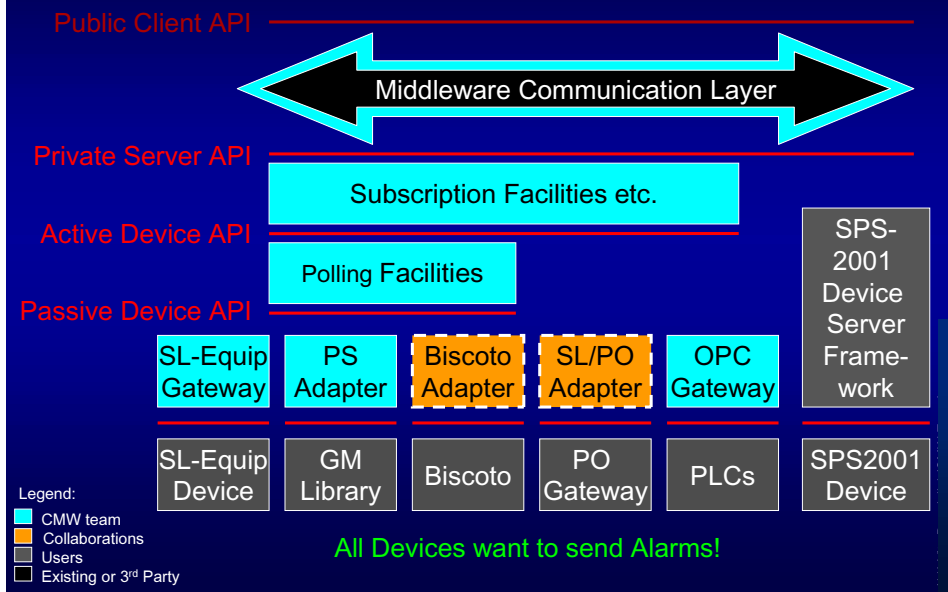
Simplified CMW Architecture



Client Side Architecture



Server Side Architecture



SPS-2001

- Thou shalt have no other Middleware before CMW* (Mike, Feb. 2002)
 - looking for a common solution => CMW
 - Contracts and Device/Property Model can coexist*
 - SPS-2001 Contracts can be placed on top of CMW
 - Also possible to use Device/Property model directly
 - Additional Work*
 - *Overlap* exists between SPS-2001 Server Framework and CMW Server Framework
 - Additional CMW functionality needed
 - *Looking to integrate features* of the SPS-2001 Device Server Framework with CMW
- (12) Vito Baggioini (CMW Team)

PS/CO

- **CMW was made to work on Front-Ends**
 - Challenge to deploy CORBA on LynxOS
 - Server Framework rewritten
 - Some Front-ends needed Memory extensions
- **Validated** in PS/CO for AD machine
 - During last 2 weeks of 2001 Run
- **Now Confident**
 - **All Java Control Programs run with CMW this year**
 - Good performance (1000 updates in 200ms)
 - 5 MBytes with Server FW and equipment libraries

(13) Vito Baggioini (CMW Team)

Biscoto

- “On a fait l’effort” (JJ. Gras)
 - Biscoto converted to Device/Property Model
 - **Kris is integrating CMW** with Biscoto
- **Questions to be addressed**
 - How to give CMW access to **TG-8 timing** in Front-ends
 - Standard Middleware uses **too much memory** for some BI front-ends
- **Testing/evaluation in the next few weeks**
- **Cesar Project will use CMW with Biscoto**

(14) Vito Baggioini (CMW Team)

LHC Power Converters

- **Late 2001 was too early**
 - CMW Server framework was **not really ready**
 - “Insufficient documentation and examples”
 - Not all required functionality available
- **SL/PO now concentrates on String 2**
 - Socket-based communication
- **Collaboration with Middleware**
 - Aim: try to **integrate PO Front-ends with CMW**
 - CMW-based communication next to sockets
 - API between PO software and CMW
 - Manpower for integration comes from CMW project

(15) Vito Baggioini (CMW Team)

SL/BT

- **New equipment will be integrated using SPS-2001 device server framework**
 - PLC based Equipment for Extraction to TI8
 - Strategy: plug SPS-2001 Server Framework into CMW
- **Exact terms to be worked out**

(16) Vito Baggioini (CMW Team)

LHC Alarms Project

- Current State
 - Close collaboration since start of CMW
 - Based on Pub/Sub (**Topic-Oriented API**)
 - **A PVSS Alarm source (VAC) is being integrated into CMW**
 - Working on unique alarm source API
- Questions to be addressed
 - **How to integrate different Equipment Servers on LynxOS** (striving for a uniform solution)
- Milestone
 - PVSS (VAC) Alarm integration by SPS Start-up
 - Goal: Validate API and Middleware integration

(17) Vito Baggiolini (CMW Team)

Conclusions

- CMW is building up momentum
 - **Used in PS, being integrated with servers of all major SL players**
 - SL-Equip and OPC access
 - Integrated in Release mechanism
- Some **shortcomings and missing functionality**
 - Documentation can still be improved
 - Memory (?)
 - Urgent functionality: C Client, Access Control,...
- CMW can play the role of an **integrating element**
 - Common Model, common APIs
 - Integration is not always simple
- **PS/CO has shown feasibility**

(18) Vito Baggiolini (CMW Team)